

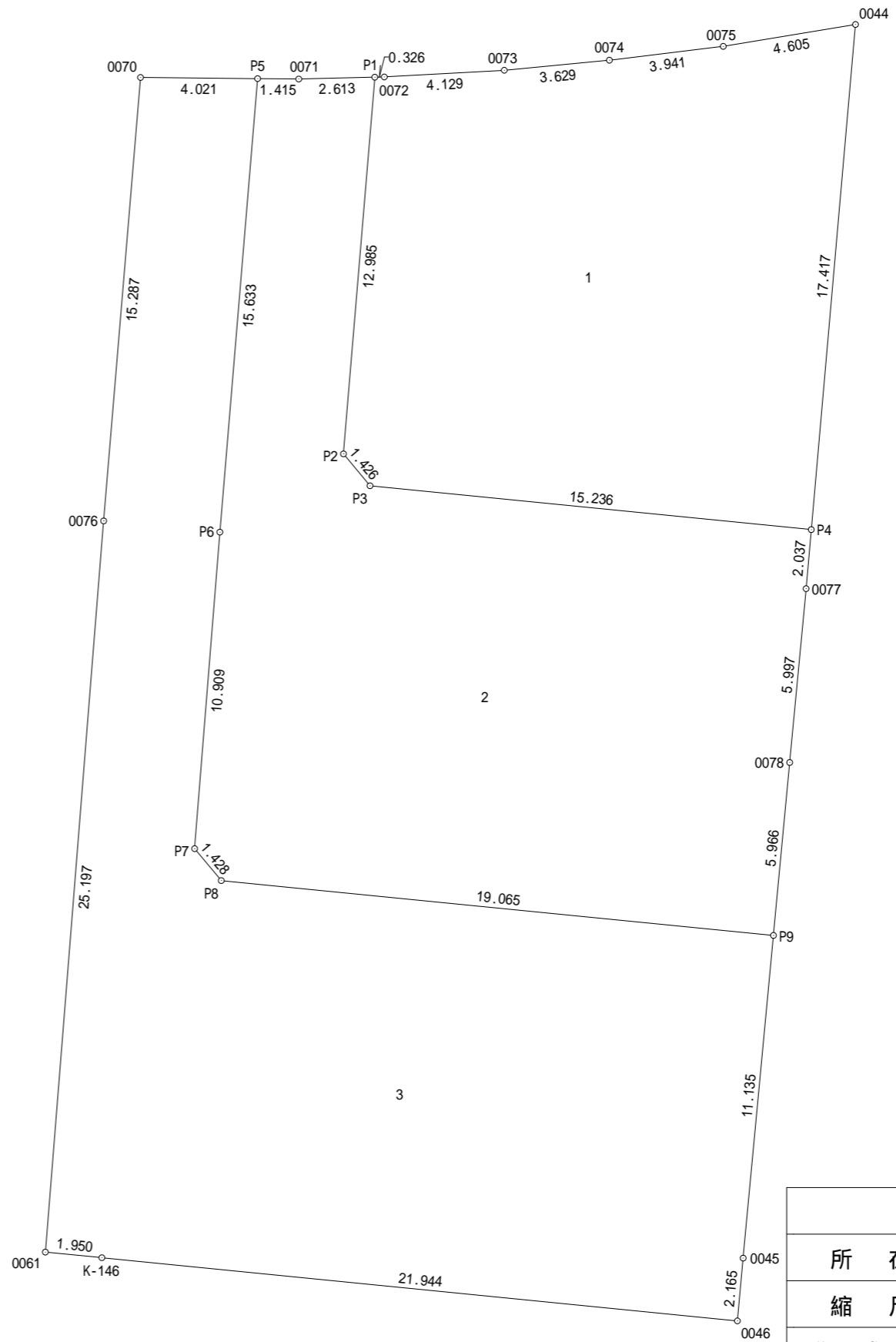
求積表

地番	1			
NO	Xn	Yn	Yn+1-Yn-1	Xn · (Yn+1-Yn-1)
P1	34102.681	-59521.302	1.402	47811.958762
0072	34102.689	-59520.976	4.449	151722.863361
0073	34102.919	-59516.853	7.735	263786.078465
0074	34103.265	-59513.241	7.524	256592.965860
0075	34103.740	-59509.329	8.455	288347.121700
0044	34104.491	-59504.786	3.024	103131.980784
P4	34087.140	-59506.305	-16.680	-568573.495200
P3	34088.645	-59521.466	-16.073	-547906.791085
P2	34089.741	-59522.378	0.164	5590.717524
合計				503.400171
合計面積				251.7000855
地積				251.70 m ²

地番	2			
NO	Xn	Yn	Yn+1-Yn-1	Xn · (Yn+1-Yn-1)
P5	34102.632	-59525.329	2.711	92452.235352
0071	34102.618	-59523.914	4.027	137331.242686
P1	34102.681	-59521.302	1.536	52381.718016
P2	34089.741	-59522.378	-0.164	-5590.717524
P3	34088.645	-59521.466	16.073	547906.791085
P4	34087.140	-59506.305	14.983	510727.618620
0077	34085.111	-59506.483	-0.741	-25257.067251
0078	34079.140	-59507.046	-1.121	-38202.715940
P9	34073.200	-59507.604	-19.530	-665449.596000
P8	34075.084	-59526.576	-19.888	-677685.270592
P7	34076.179	-59527.492	-0.049	-1669.732771
P6	34087.053	-59526.625	2.163	73730.295639
合計				674.801320
合計面積				337.4006600
地積				337.40 m ²

地番	3			
NO	Xn	Yn	Yn+1-Yn-1	Xn · (Yn+1-Yn-1)
0070	34102.672	-59529.350	5.288	180334.929536
P5	34102.632	-59525.329	2.725	92929.672200
P6	34087.053	-59526.625	-2.163	-73730.295639
P7	34076.179	-59527.492	0.049	1669.732771
P8	34075.084	-59526.576	19.888	677685.270592
P9	34073.200	-59507.604	17.930	610932.476000
0045	34062.114	-59508.646	-1.240	-42237.021360
0046	34059.958	-59508.844	-22.034	-750477.114572
K-146	34062.128	-59530.680	-23.776	-809861.155328
0061	34062.321	-59532.620	0.063	2145.926223
0076	34087.438	-59530.617	3.270	111465.922260
合計				858.342683
合計面積				429.1713415
地積				429.17 m ²

総合計面積	1018.2720870 m ²
-------	-----------------------------



求積図	
所在	伊勢崎市葦塚町字西本郷977-2外
縮尺	1/200
作成日	令和6年9月3日
作成者	土地家屋調査士 須長 亮